

RAZOR™
Z I R C O N I
A2
W1100

| | |
|-------|-------------|
| LOT | 1161025 |
| Shri. | 1.2658(19. |
| MF | U&C interna |

everest
multilayer_AT
UNC
International

everest
multilayer_PT
UNC
International

About UNC – About us

Business
service
leader



The UNC International is a Venture company included in the Korea Institute of Ceramic Engineering and Technology (KICET), the most prominent national laboratory in Korea.

The UNC Int. was founded in 2013, specialized in manufacturing Zirconia block for dental CAD/CAM.

We consist of experienced experts, and exports high quality products on the basis of the trust given by our customers.

Based on the trust and belief, do our best to be a leading company that Dental Zirconia block for dental CAD/CAM

UNC International Co.,Ltd. promises world's best competitive products by providing optimized products and solutions required by the global dental market

| | |
|-------------------------------|---|
| Company name | UNC International Co.,Ltd |
| President | Jung Hyung-Ho, Han Hee-Jun |
| Date for establishment | 18 June 2013 |
| Major products | Zirconia block for Dental CAD/CAM |
| Address | 910 ,5th Ace-techno Tower. Digitalro 31gil 20, Gurogu Seoul, Korea |

UNC In the world



A great leap into the world of UNC International

More than 20 million of prosthetics were made of UNC zirconia.
And more than 17 countries are using UNC International's products.
Even at this moment,
The prosthetics made of UNC zirconia are producing , one in three seconds.



Contents

EVEREST

- AT
- PT

RAZOR

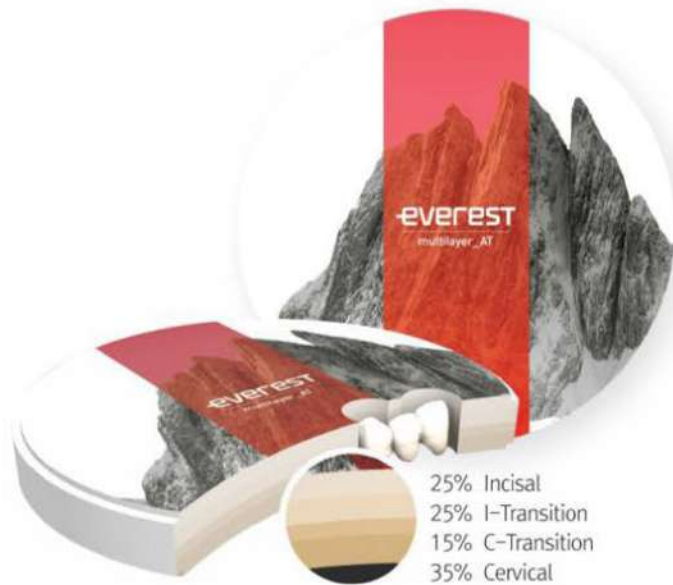
- 800
- 1100
- 1300

Shade liquid / Clinical case

A black and white photograph of Mount Everest, showing its jagged, rocky peaks and snow-covered ridges. The sky is filled with scattered clouds. The word "EVEREST" is printed in large, white, sans-serif capital letters across the right side of the image.

EVEREST

EVEREST Multilayer AT EVEREST Multilayer PT Monolithic



25% Incisal
25% I-Transition
15% C-Transition
35% Cervical



Height | 12mm/14mm/16mm/18mm/20mm/22mm/25mm/30mm(Ø98)

Shade | BL1/BL3/A1/A2/A3/A3.5/A4/B1/B2/B3/B4/C1/C2/C3/C4/D2/D3/D4

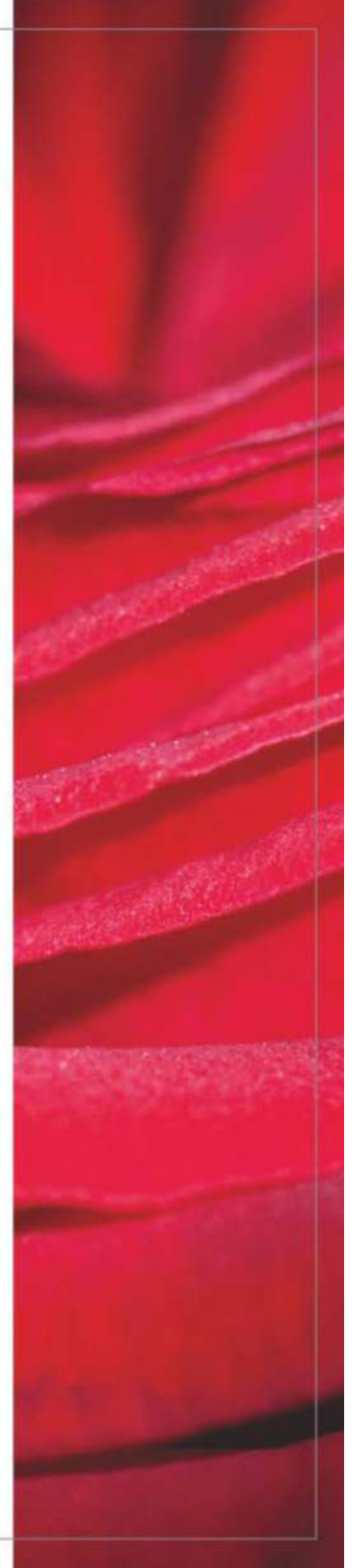
Everest Multilayer, composed four-layer color structure, have high level color matching condition with a **VITA Classical Shade Guide**

It is possible to make prosthesis without coloring process.

Multilayer AT is a Multilayered zirconia block designed for show the rich hue and high transparency of anterior teeth. It makes you for making the best prosthesis with optimized flexural strength ($900 \pm 50 \text{MPa}$) and **18 shades**.

| Material | Unit | AT | Test Method |
|--------------------------------|------|---------|-------------|
| ZrO ₂ | wt % | 84~90 | ICP |
| Y ₂ O ₃ | | 7.0~9.0 | |
| SiO ₂ | | ≤0.01 | |
| Fe ₂ O ₃ | | ≤0.001 | |
| CaO | | ≤0.007 | |
| Na ₂ O | | ≤0.004 | |

| Property | Unit | AT | Test Method |
|-------------------------------|-------------------|-------------------------|---|
| Sintered Density | g/cm ³ | ≥6.04 | Archimedes' method |
| Bending Strength | MPa | 900±50 | 3-point-bending ISO 6872 |
| Transparency | % | ≥47±0.5 | Spectrophotometer (T=p/p ₀) |
| Thermal Expansion Coefficient | K ⁻¹ | 10.5 · 10 ⁻⁶ | ASTM Test Method E 289 |



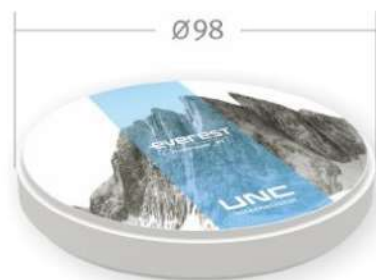
EVEREST Multilayer AT **EVEREST Multilayer PT** Monolithic



UNC
International



25% Occlusal
25% O-Transition
15% C-Transition
35% Cervical



Ø98



Ø95

Height | 12mm/14mm/16mm/18mm/20mm/22mm/25mm/30mm(Ø98)

Shade | BL1/BL3/A1/A2/A3/A3.5/A4/B1/B2/B3/B4/C1/C2/C3/C4/D2/D3/D4

Everest Multilayer, Composed four-layer color Structure, have high level color matching condition with a **VITA Classical Shade Guide**.

It is possible to make prosthesis without special coloring process

Multilayer PT is a multilayered zirconia block designed to have natural gradation of the posterior teeth and strength to withstand stress. It makes you for making the best prosthesis with high flexural strength ($1200 \pm 50\text{MPa}$) and **18 Shades**.

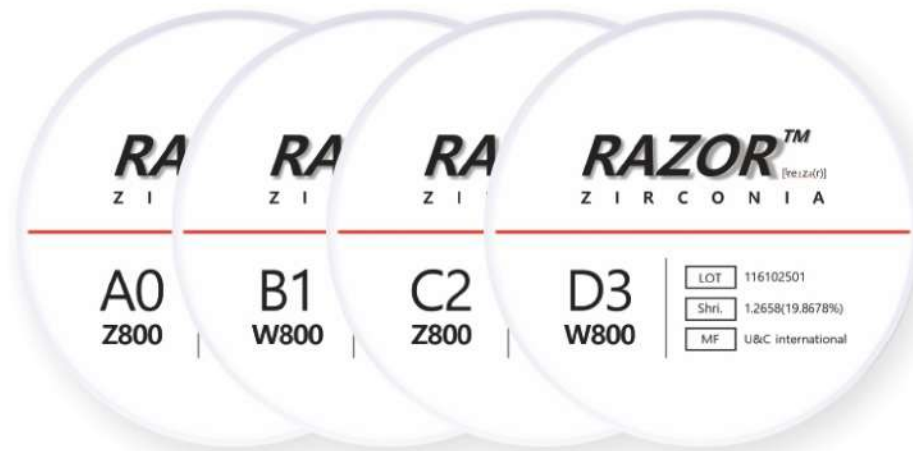
| Material | Unit | PT | Test Method |
|--------------------------------|------|---------|-------------|
| ZrO ₂ | wt % | 88~92 | ICP |
| Y ₂ O ₃ | | 5.0~8.0 | |
| SiO ₂ | | ≤0.01 | |
| Fe ₂ O ₃ | | ≤0.001 | |
| CaO | | ≤0.007 | |
| Na ₂ O | | ≤0.004 | |

| Property | Unit | PT | Test Method |
|-------------------------------|-------------------|-------------------------|----------------------------|
| Sintered Density | g/cm ³ | ≥6.05 | Archimedes' method |
| Bending Strength | MPa | 1200±50 | 3-point-bending ISO 6872 |
| Transparency | % | ≥45±0.5 | Spectrophotometer (T=p/p0) |
| Thermal Expansion Coefficient | K ⁻¹ | 10.5 · 10 ⁻⁶ | ASTM Test Method E 289 |





R A Z O R



Razor800 is designed to describe the transparency of anterior teeth. You can make the beautiful prosthesis with the **Razor800** which has a **high quality transparency** than the other blocks.

It is a surprisingly well matched zirconia block with the **VITA Shade Guide**, You can make the best prosthetics by using **Razor800** of **16 VITA shades and bleached**. (total 17 shade composed)



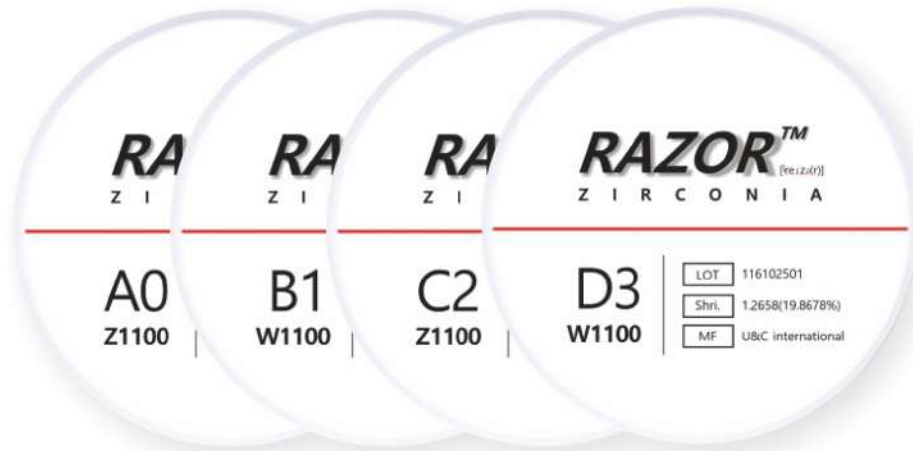
Height | 10mm/12mm/14mm/16mm/18mm/20mm/22mm/25mm /30mm(Ø98)

Shade | Bleach/A1/A2/A3/A3.5/A4/B1/B2/B3/B4/C1/C2/C3/C4/D2/D3/D4

| Material | Unit | Razor 800 | Test Method |
|--------------------------------|------|-----------|-------------|
| ZrO ₂ | wt % | 84~88 | ICP |
| Y ₂ O ₃ | | 8.0~9.0 | |
| SiO ₂ | | ≤0.01 | |
| Fe ₂ O ₃ | | ≤0.001 | |
| CaO | | ≤0.007 | |
| Na ₂ O | | ≤0.004 | |

| Property | Unit | Razor 800 | Test Method |
|-------------------------------|-------------------|-----------|----------------------------|
| Sintered Density | g/cm ³ | ≥6.03 | Archimedes' method |
| Bending Strength | MPa | 800±50 | 3-point-bending ISO 6872 |
| Transparency | % | ≥48 | Spectrophotometer (T=p/p0) |
| Thermal Expansion Coefficient | K ⁻¹ | 10.0 | ASTM Test Method E 289 |





Razor1100 is a mono-color zirconia block with harmony between high-hardness blocks and high-strength blocks.

It is a surprisingly well matched zirconia block with the **VITA Shade Guide**, You can make the best prosthetics by using **Razor1100** of 16 **VITA shades** and **bleached**. (total 17 shade composed)



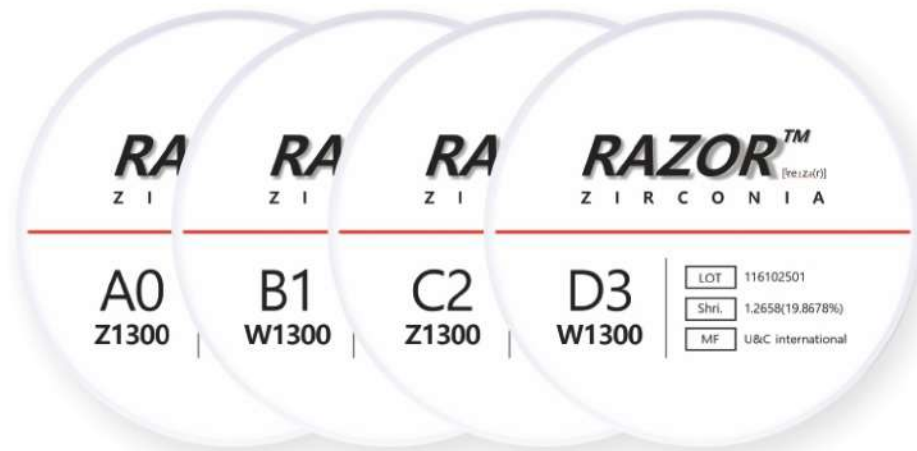
Height | 10mm/12mm/14mm/16mm/18mm/20mm/22mm/25mm /30mm(Ø98)

Shade | Bleach/A1/A2/A3/A3.5/A4/B1/B2/B3/B4/C1/C2/C3/C4/D2/D3/D4

| Material | Unit | 1100 | Test Method |
|--------------------------------|------|---------|-------------|
| ZrO ₂ | wt % | 88-90 | ICP |
| Y ₂ O ₃ | | 7.0-8.0 | |
| SiO ₂ | | ≤0.01 | |
| Fe ₂ O ₃ | | ≤0.001 | |
| CaO | | ≤0.007 | |
| Na ₂ O | | ≤0.004 | |

| Property | Unit | 1100 | Test Method |
|-------------------------------|-------------------|---------|---|
| Sintered Density | g/cm ³ | ≥6.04 | Archimedes' method |
| Bending Strength | MPa | 1100±50 | 3-point-bending ISO 6872 |
| Transparency | % | ≥46 | Spectrophotometer (T=p/p ₀) |
| Thermal Expansion Coefficient | K ⁻¹ | 10.3 | ASTM Test Method E 289 |





RAZOR1300 is a high strength mono-color zirconia block developed to overcome the harsh environment in oral.

It is a surprisingly well matched zirconia block with the VITA Shade Guide, You can make the best prosthetics by using Razor1 300 of 16 different VITA shades and bleached. (total 17 shade composed)

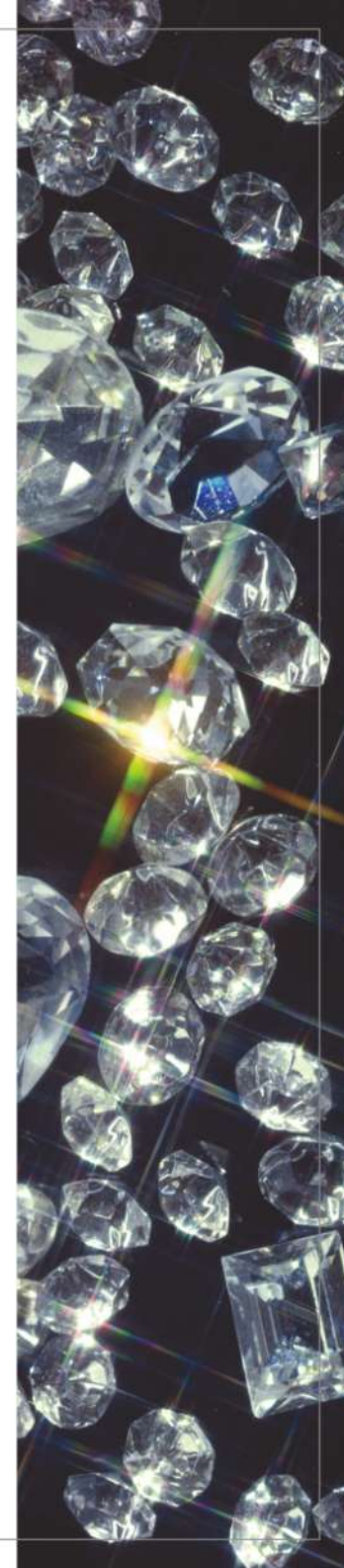


Height | 10mm/12mm/14mm/16mm/18mm/20mm/22mm/25mm /30mm(Ø98)

Shade | Bleach/A1/A2/A3/A3.5/A4/B1/B2/B3/B4/C1/C2/C3/C4/D2/D3/D4

| Material | Unit | 1300 | Test Method |
|--------------------------------|------|---------|-------------|
| ZrO ₂ | wt % | 91~92 | ICP |
| Y ₂ O ₃ | | 5.0~7.0 | |
| SiO ₂ | | ≤0.01 | |
| Fe ₂ O ₃ | | ≤0.001 | |
| CaO | | ≤0.007 | |
| Na ₂ O | | ≤0.004 | |

| Property | Unit | 1300 | Test Method |
|-------------------------------|-------------------|---------|----------------------------|
| Sintered Density | g/cm ³ | ≥6.05 | Archimedes' method |
| Bending Strength | MPa | 1300±50 | 3-point-bending ISO 6872 |
| Transparency | % | ≥45 | Spectrophotometer (T=p/p0) |
| Thermal Expansion Coefficient | K ⁻¹ | 10.5 | ASTM Test Method E 289 |



everEST Coloring



Everest Coloring Liquid is a universal coloring items that can be used in whole zirconia blocks as well as in Everest zirconia blocks of UNC International Co., Ltd. Especially, it is applicable to various clinical aesthetic cases using this product and it is very useful for making natural restorations of zirconia materials.

composition

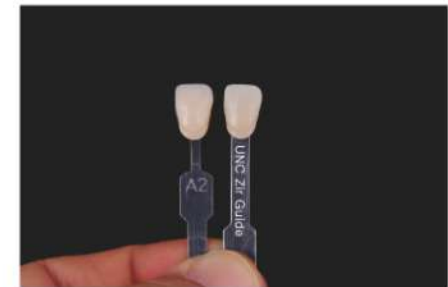
Dentin I A1/A2/A3/A3.5/A4/B1/B2/B3/B4/C1/C2/C3/C4/D2/D3/D4
Effect I Gray, Violet, Sky Blue, Orange, Brown, White, Pink, Opaque, Incisal

everEST Clinical Case



RAZOR™ 800

Shade comparison with
VITA classical shade guide



everEST AT

Summary



| Product | Type | Shade | Flexural Strength(MPa) | Indication | |
|---|------|------------|--------------------------------|------------|---|
|  | AT | Multilayer | BL1, BL3 A1~D4 16 Shades | 900±50 | Full single Crown Long Span Bridge on Anterior teeth |
|  | PT | Multilayer | BL1, BL3 A1~D4 16 Shades | 1200±50 | Full single Crown Long Span Bridge on Posterior teeth |

| Product | Type | Shade | Flexural Strength(MPa) | Indication | |
|---|------|-----------|------------------------------|------------|--|
|  | 800 | Monolayer | Bleach A1~D4 17 Shades | 800 | Full single Crown Copping, Copping Bridge Long Span Bridge |
|  | 1100 | Monolayer | Bleach A1~D4 17 Shades | 1100 | Full single Crown Copping, Copping Bridge Long Span Bridge |
|  | 1300 | Monolayer | Bleach A1~D4 17 Shades | 1300 | Full single Crown Copping, Copping Bridge Long Span Bridge |



UNC
International

910room, 5th AceTechno-Tower, 20, Digital-ro 31gil, Guro-gu, Seoul, Korea
Factory : Hankook Trans, 13, Digital-ro27gil, Guro-gu, Seoul, Korea

Tel. +82-2-864-7715 / Fax. 82-2-864-7713 / Web. www.uncint.com